

EmployeeCenter™





Next Gen UI

“Engage your employees, promote cross-company collaboration and make informed talent decisions within a rich, next generation, user experience.”

Tagging

- Next generation UI technology embedded within Oracle e-Business Suite
- Powerful Employee Search
- Personal description and previous experience
- Graphical Organization Chart
- Tagging and Tag Cloud
- Faces Views: Direct Reports & Peers
- Google Maps integration
- Availability, integrated to absence, work schedules & training
- Links profiles to social network sites, like Facebook and LinkedIn
- Intranet Ready
- Compatible with 11i, 12.0 and 12.1

Skill Search

A complete picture of your employees.

How well do you know your employees? How well do they know each other? What are their skills, interests and function within your organization?

Knowing an employee's department, work location and job title is important. But it doesn't provide anyone the rich picture of who they really are. What is their past experience, what are their key skills, what do they *really* do in their current role? Is there anyone in the business who might be able to fill a new resource requirement or aid you in achieving an objective by answering a work related question?

EmployeeCenter™ promotes collaboration by delivering a next generation employee experience that combines cutting edge UI technology with the power of the Oracle HR e-Business Suite. And by delivering all this on today's technology, you can start experiencing **tomorrow's applications today**.



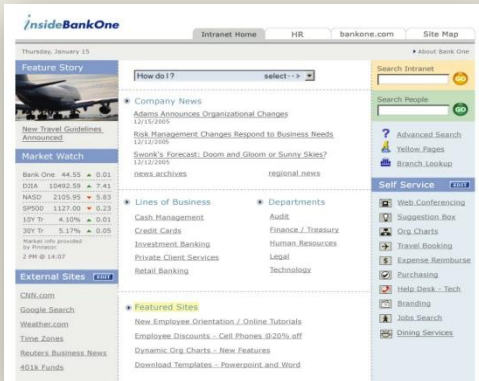
The image displays a screenshot of the Oracle HR e-Business Suite Manager Self-Service interface. On the left, a navigation pane titled "Oracle Applications Home Page" lists various application areas, including "Employee Self-Service", "Recruitment", and "Performance Management". A blue arrow points from the "EmployeeCenter" link in this list to the main content area. The main content area shows a "My Profile" section with a "My Team" list. The "My Team" list includes a "Manager" section with a profile for Casey Brown and a "Peers" section with profiles for Jeremy Bingham, Kathy Brady, Pamela Goldman, and Donald Gray. On the right, a "Profile for Barry Ericks" is visible, showing a contact details section with a phone number and an "Available" status section with a quote.

EmployeeCenter™ Feature Snapshot

EmployeeCenter™ connects your workforce by delivering an integrated portal capturing rich employee information. Some of the capabilities of the module include:

- **Personal Profile & Experience** Allow your employees to describe exactly what they do now and their previous experience and skills – available for anyone to view and search on.
- **Power Search** More than just a simple name search: get hits on anything that the employee has written about themselves, including previous experience and their current job role.
- **Business Card View** A view of the employee's contact details, photo (with support for photo upload) and availability, integrated to work schedules, training & absence records.
- **Graphical Org Chart** A simple to use, 'out of the box', organization chart based directly on your Oracle HR data, with support for all types of hierarchy, from positions to multiple supervisor assignments
- **Google Map Integration** Out of the box integration with Google Maps showing the work location of each employee, based on the address specified in the HR system.
- **Social Network Sites** Link profiles to external social networking sites such as Facebook and LinkedIn.
- **Tagging and Tag Cloud** Tags promote social networking and collaboration by allowing workers to identify with specific interest groups.





Intranet Ready

EmployeeCenter™ is delivered as a new item that can be added to your standard Oracle Self Service menu but can also be deployed directly onto your intranet, configured with read-only guest access so that your users don't need to log in. Secure Web Services are used to connect to Oracle to retrieve only the data you require for your internal website.

Personalize Look and Feel

EmployeeCenter™ allows you to change prompt text, fonts, background colours & icons so that the screens blend in with your corporate identity. Power users can completely change the look of items such as buttons and picklists, allowing you to seamlessly integrate EmployeeCenter™ into your intranet.



Total Configurability

EmployeeCenter™ delivers best practice configuration out of the box so you can be up and running straight away. Use familiar setup like Fast Formula and Menu Functions to make common configuration tweaks, or, with only the minimum of technical skills, extend any of the in-built services to give you absolute flexibility.

What do I need to run EmployeeCenter™?

Designed to be a cost effective solution that can be rapidly deployed to existing Oracle HR e-Business Suite installations, EmployeeCenter™ requires *no* additional software purchases to run.

Neither do you need to upgrade Oracle Applications: EmployeeCenter™ is fully compatible with R11.5.10 CU2 and all versions of Release 12.0 and 12.1.

An Oracle 10g database is required. Flash 9 player is required on machines that will be accessing EmployeeCenter™.

Profile for Barry Erickson

My Profile

View My Profile

Top 6 Ac

Workdis

Persona
Informati

All Actio

My Team

Favourites

500 Madison Ave, New York,
United States

POWERED BY
Google



It just works

“EmployeeCenter™” from Applaud Solutions integrates seamlessly with your existing implementation of Oracle HRMS. All our developers have worked in Oracle’s own world-class development team, which brings the promise of Oracle standards, compatibility and the highest quality. We have combined our expertise to provide our customers with packaged, ‘out of the box’ products that could previously only be achieved with costly consultancy or large in-house teams

- Be up and running in days – installed by your DBAs, configured by you, with an easy to follow implementation guide
- Use familiar technology to configure, like Oracle Fast Formula and SQL
- Remain confident that future release 12 and 11i patches and upgrades are compatible
- Rest assured that only Oracle-supported extensions are used
- Protect your investment: Applaud Solutions offers a full support package for all our products

Installation

The solution is installed by your DBAs on your Oracle database instance. A comprehensive, easy to follow installation guide is provided for both Windows and Linux. Installation takes around 2 hours per database instance.

Implementation

Implementation and User Guides are available for you to configure the solution at your own pace without the need of onsite consultancy.

Product availability

To learn more about this product and its availability, please email products@applaudsolutions.com



Applaud Solutions
Suite 1011 Northway House,
1379 High Road, Whetstone,
London N20 9LP

www.applaudsolutions.com

